

ES12 Airport Shuttle Service GSO – WFU

Times based on 40 - 45 minutes driving time between WFU and GSO

June 5, 2012 (GSO to WFU)

GSO Pick-Up	Depart GSO	Arrive WFU Polo Hall
2:00 pm - 2:15 pm passenger pick-up	2:20 pm	3:00 pm
3:00 pm - 3:15 pm passenger pick-up	3:20 pm	4:00 pm
4:00 pm - 4:15 pm Passenger pick-up	4:20 pm	5:00 pm
5:00 pm - 5:15 pm Passenger pick-up	5:20 pm	6:00 pm
6:00 pm - 6:15 pm Passenger pick-up	6:20 pm	7:00 pm
7:00 pm - 7:15 pm Passenger pick-up	7:20 pm	8:00 pm
8:00 pm - 8:15 pm Passenger pick-up	8:20 pm	9:00 pm

June 8, 2012 (WFU to GSO)

Benson Pick-up	Depart WFU	Arrive GSO
12:00 pm - 12:15 pm passenger pick-up	12:20 pm	1:00 pm
1:00 pm - 1:15 pm passenger pick-up	1:20 pm	2:00 pm
2:00 pm - 2:15 pm Passenger pick-up	2:20 pm	3:00 pm
3:00 pm - 3:15 pm Passenger pick-up	3:20 pm	4:00 pm
4:00 pm - 4:15 pm Passenger pick-up	4:20 pm	5:00 pm
5:00 pm - 5:15 pm Passenger pick-up	5:20 pm	6:00 pm

June 5, 2012

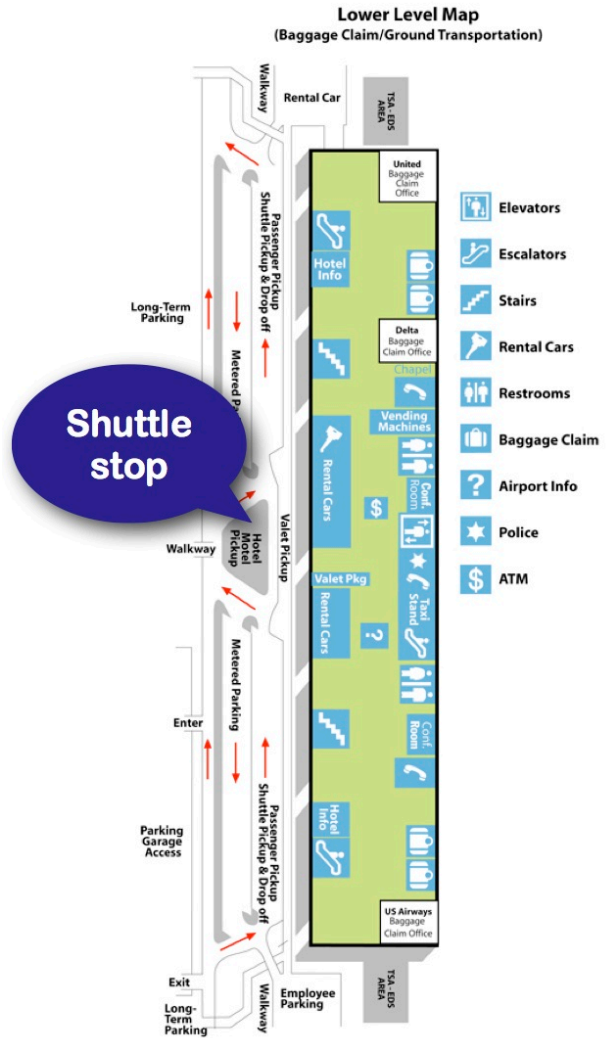
GSO airport pick-up: The WFU shuttle will pick-up workshop participants outside the baggage claim area on the lower level. The shuttle will wait at the times indicated above, at the point marked “Shuttle stop” in the figure to the right.

WFU drop-off: Workshop participants will be dropped-off on campus right in front of Polo Residence Hall.

June 8, 2012

WFU pick-up: Workshop participants will be picked-up right in front of Benson University Center.

GSO airport drop-off: Workshop participants will be dropped-off at the point marked “Shuttle stop” in the figure to the right.



The WFU shuttle is clearly marked with the text “Wake Forest University,” in addition to the university logo—see the figure to the right. The shuttle will also have additional signs saying “E12 Conference.”

